

CMP series pilot machine

PRODUCT DESCRIPTION

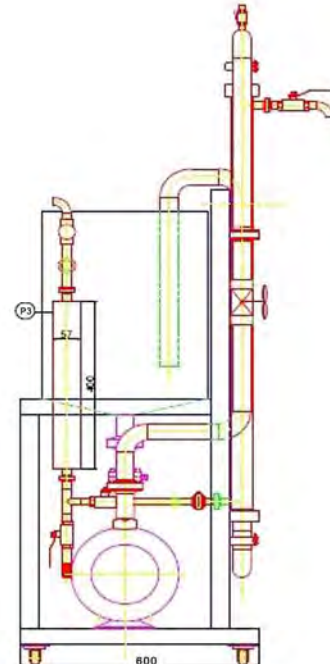
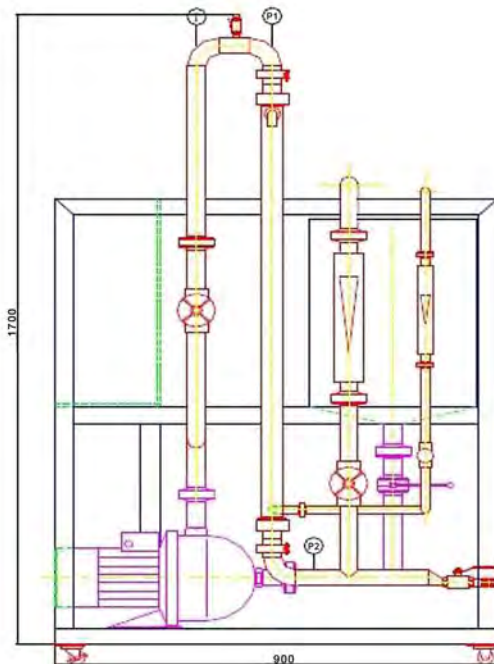
Model : CMP-02B
Serial number: 95004
Raw Material: SUS304
Construction: Multi-function membrane pilot test machine
Major application:
University
Research institute
R&D of company



STANDARD CONFIGURATION

Stainless steel module: CMV1-30
Membrane area: 0.24 m²
Circulation pump: Grundfos centrifugal type
Feed tank: 30L/ with heat jacket 0.4m²
Back Flush System with connection for compressed air
Glass Flow meter for Retentate and permeation
Thermometer
Pressure gauge
Electronic cabinet
Stainless steel rack SUS304 (Four castors)

PRODUCT DIMENSIONS



CMP Pilot machine

Operation condition

Operating Pressure: 2-4bar

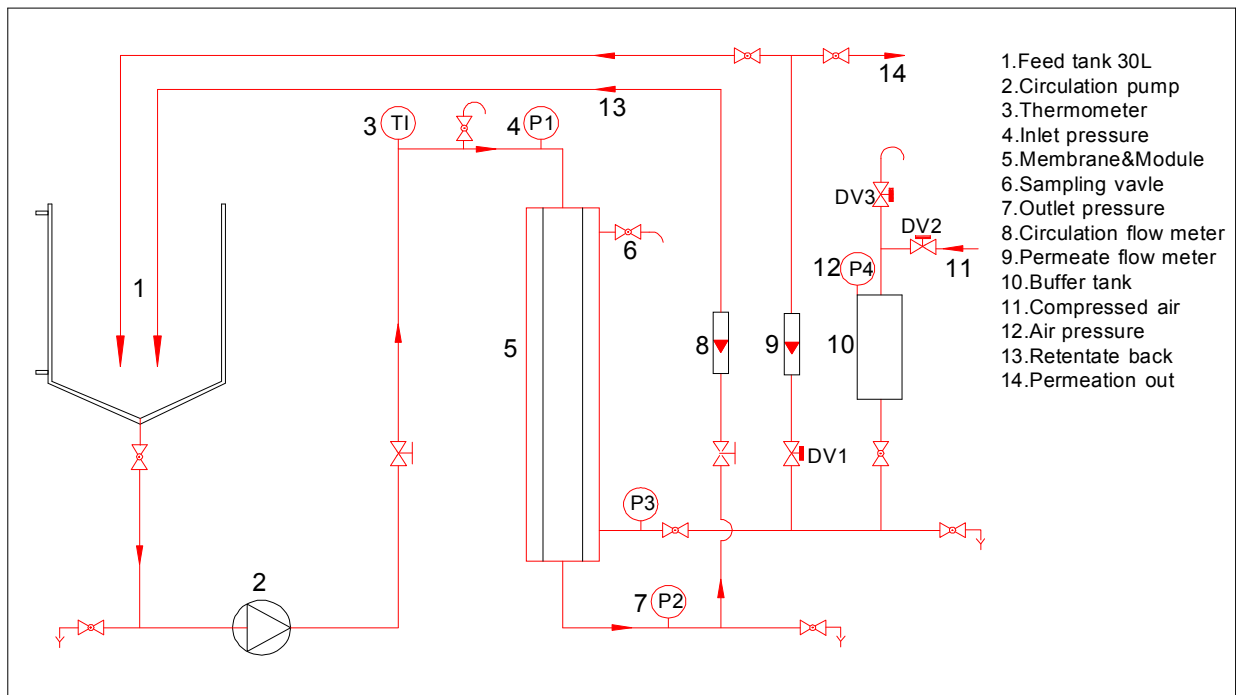
Temperature: 0-100°C

Feed Flow : 4-7m³/h

Pure water flux: 120-336 LPH

Dead volume: 6L

Flow diagram



Service and Ongoing Technical Support

The information contained in this publication is believed to be accurate and reliable, but is not to be construed as implying any warranty or guarantee of performance. We assume no responsibility, obligation or liability for results obtained or damages incurred through the application of the information contained herein. Refer to Standard Terms and Conditions of Sale and Performance Warranty documentation for additional information.

Microsphere International Limited

Room 3106, Jianguo Int'l Trade Mansion

50 Zhonghua Road, Nanjing

P. R. China

Tel: +86-25-52166208

Fax: +86-25-52160669

[Http://www.microsphere.biz](http://www.microsphere.biz)