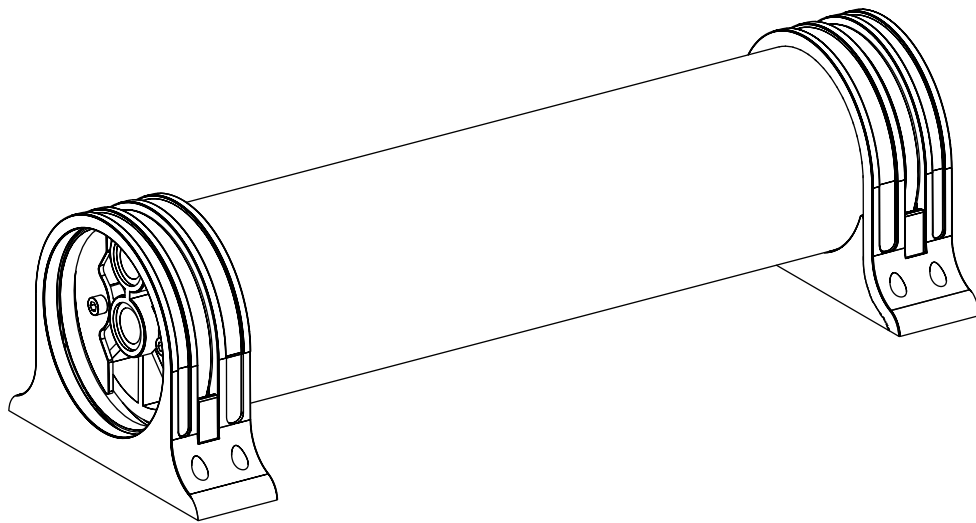


Ceramic UF Membrane Water Purifier

Product Installation & Operation Manual



Microsphere International Ltd.

50 Zhonghua Road, Nanjing, China

Phone: +86-25-52166208

Fax: +86-25-52160669

E-mail: info@microsphere.biz

Table of Contents

Before Your Start	P2
Specifications & Dimensions	P2
Installation Instructions	P3
Operation Instructions	P4
Exploded View	P5
Warranty	P6
Packing List	P7

Before Your Start

- In order to receive all of the benefits of your UF water purifier, be sure to read all steps in this guide carefully and follow steps exactly.
- This system is intended for use with municipal and/or well water only. It is not intended for use with surface water such as from a lake or runoff.
- System is not intended to convert waste-water or raw sewage into drinking water.
- Installation and plumbing should comply with all local laws and regulations. Consult with your licensed plumber.

Specifications & Dimensions

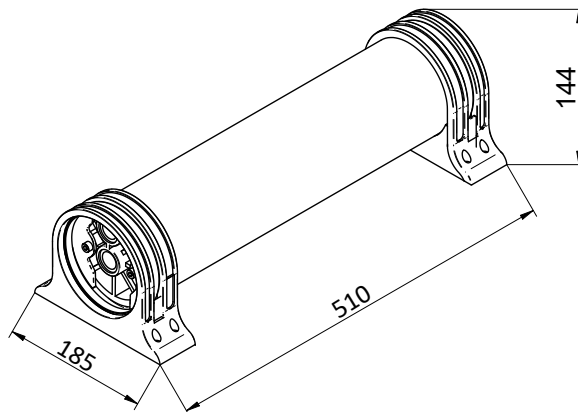
Supply water pressure: 1bar(14.5psi) ~ 6bar(87psi)

Supply water temperature: 1 °C ~ 90°C (33°F ~ 194°F)

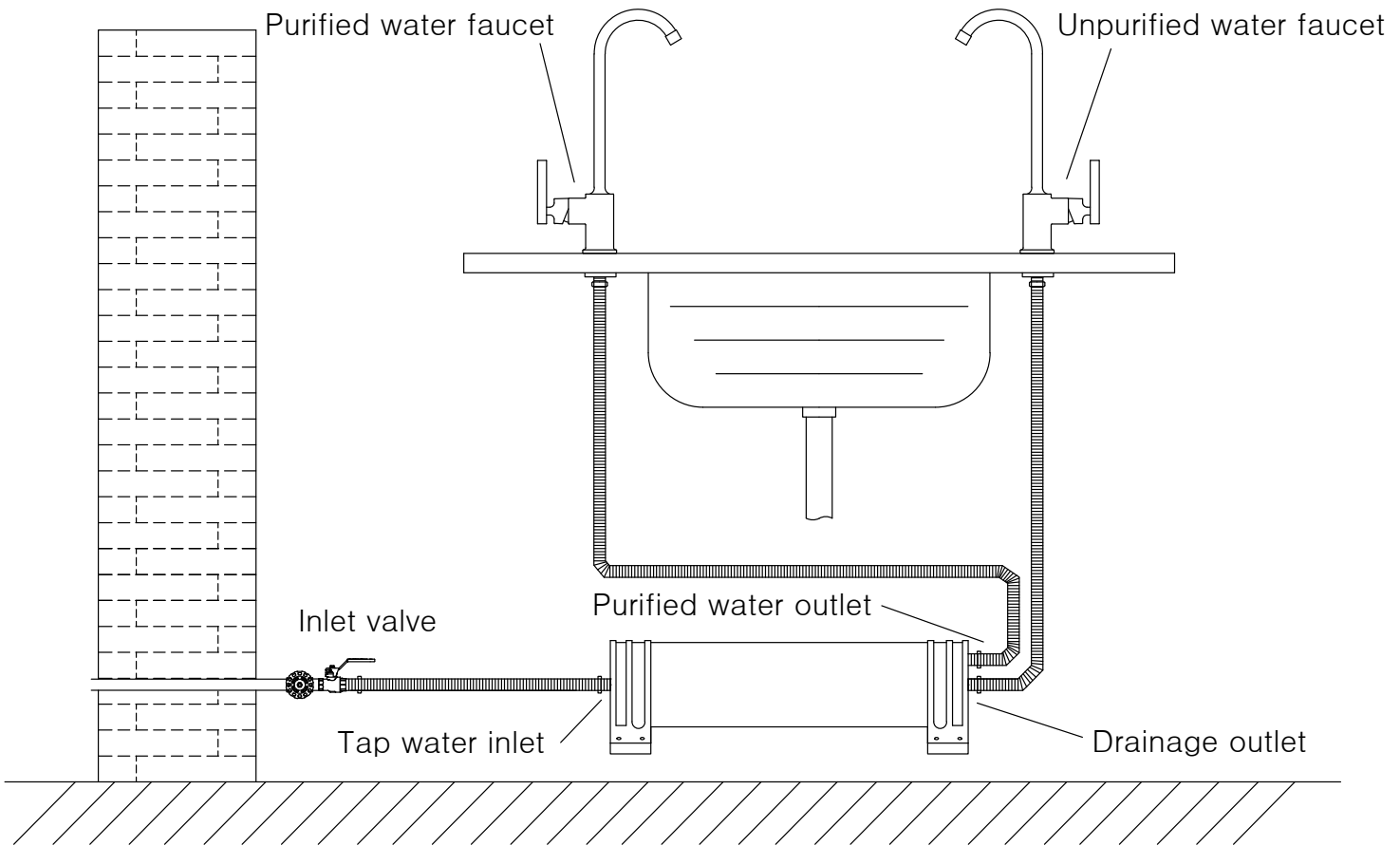
Purified water flow rate: 1.6GPM @1bar(14.5psi)

Dimensions: 510mm(L)x144mm(H)x185mm(W)

Weight: 4.50 Kgs



Installation Instructions



Typical under-sink installation drawing

1. Confirm the location before installing the water purifier. (It depends on the actual installation).
2. Turn off the water inlet valve before installation.
3. Use the tubing (1/2" or 3/8") to connect the tap water inlet to the inlet valve, connect the purified water outlet to the purified water faucet and connect the drainage outlet to the unpurified water faucet according to the above drawing.

Operation Instructions

1. Check water purifier and components regularly to avoid leakage, which may cause damage to property.
2. Turn on the water inlet valve.
3. Flush procedure: the water purifier should always be flushed when it is new and has not been used. You may see a grayish water or water with bubbles, it is normal. Stop the flushing until the water is clear. Do not drink the water when the water purifier flushes.
4. Start-up of the purifier, close the purified water faucet and open the unpurified water faucet to drain the air in the purifier till the water was falling from the faucet. Then close the unpurified water faucet and open the purified water faucet to provide clean water.
5. In case of any following situations, shut off the input water of the purifier (turn off the water inlet ball valve) immediately, and contact the service provider as soon as possible.

If the pipe or related parts of the water purifier are leaking.

If the related components of the water purifier malfunction.

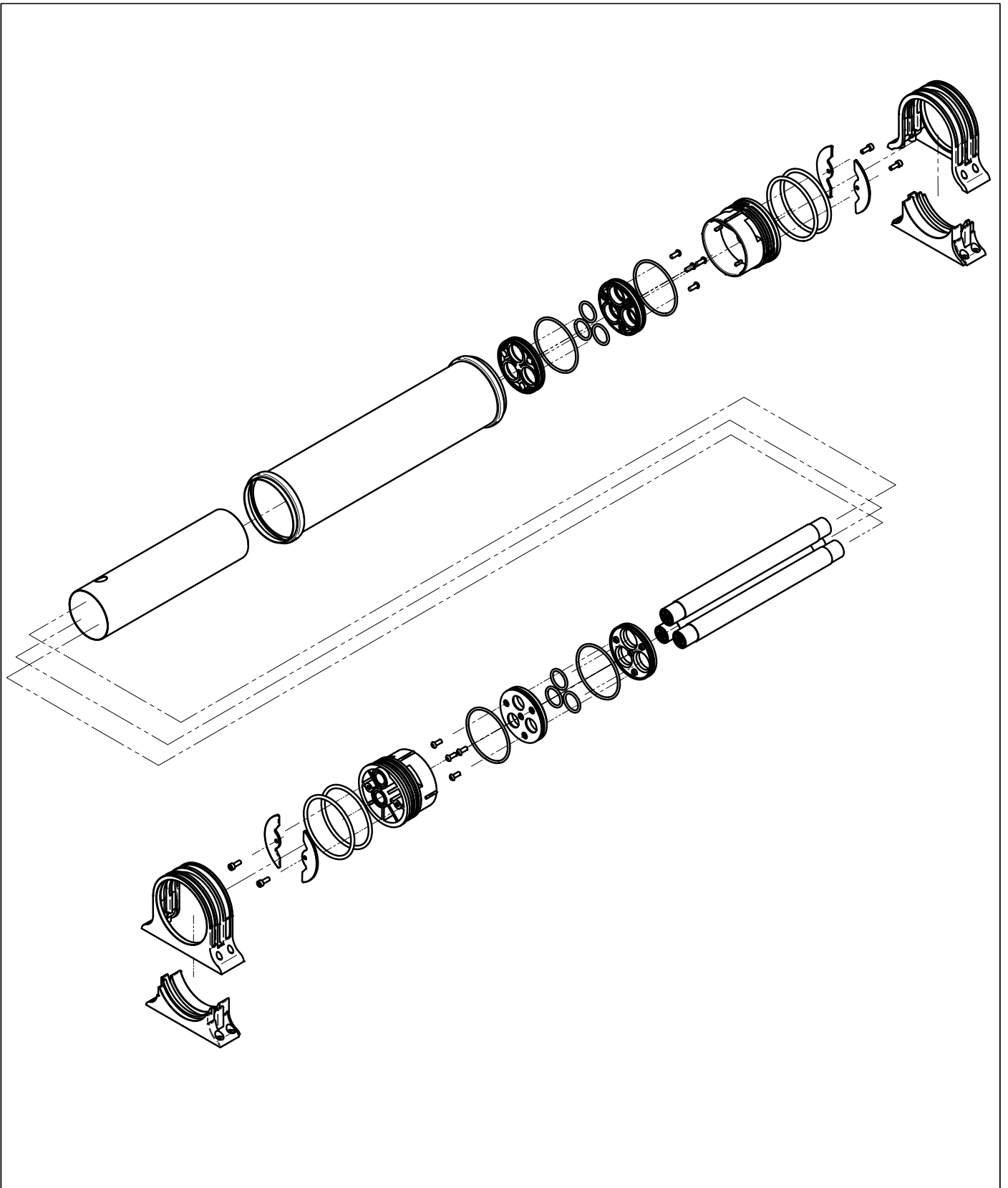
If any other anomalies or failures occur.

Tips:

Open the unpurified water faucet to maximum and keep the tap running which is the cleaning process for the purifier. So open the unpurified water faucet to maximum as much as possible when you need only unpurified water, for example, washing the dishes.

In general, the two faucets have been used alternately will keep the purifier in good status and keep the flow rate of purifier water constant for a very long time.

Exploded View



Warranty

1. Warranty period

We provide ten years warranty for filter cartridges and five years for whole product, but consumables are not covered (consumables include union fittings, spacers).

2. Warranty conditions

Users should follow the following rules, or else the warranty rights will be voided.

- Users should purchase the product from legal sellers through legal ways.
- The product should be installed and used following the manual strictly.

3. Exceptional conditions

- 1) Purchase the product through illegal means or illegal ways.
- 2) Product malfunctions or damages caused by installation of the unqualified team or without guidance of the manufacturer.
- 3) Use non-authorized parts or accessories.
- 4) Malfunctions or damages caused by forced use under abnormal conditions.
- 5) Damages caused by force majeure.

4. Warranty service

- Repair the malfunctioned products for free;
- Replace the malfunctioned parts for free;
- Other services specified in the State regulations, including local laws.

This warranty applies to consumer-owned installations only.

5. Warranty service procedure

When the product malfunctions, turn off the water immediately. After verifying that it meets all the requirements, contact the specified service provider immediately.

Packing List

No.	Item	Qty.
1	filter	1
2	1/2" (or 3/8") union fitting	3
3	spacer	3
4	manual	1